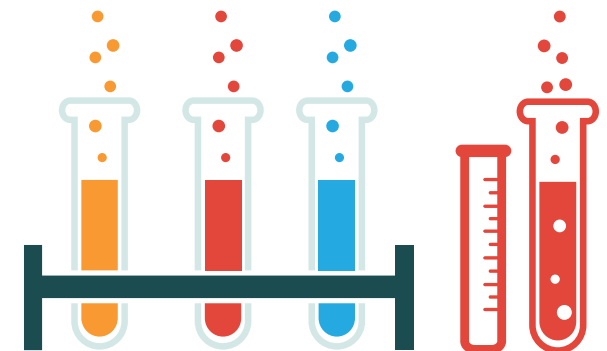


Content

Tropical& Vector-Borne	1	Cancer Marker	15
Respiratory Tract	5	Inflammation	16
Sexually Transmitted	9	Fertility Hormones	17
TORCH & Childhood	11	Allergen	17
Hepatitis	12	Drug of Abuse	18
Gastrointestinal Pathogens	13		



Tropical& Vector-Borne Diseases

Product Name	Catalog	Specimen	Sensitivity	Specificity
Typhoid IgG/IgM	RR0111	S/P	92%	99.10%
Typhoid IgG/IgM	RR0111W	WB/S/P	92%	99.10%
Typhoid Antigen	RR0121	Feces	92%	99.10%
Dengue IgG/IgM	RR0211	S/P	IgG:98.8% IgM:91.6%	IgG:99.8% IgM:98.7%
Dengue IgG/IgM	RR0211W	WB/S/P	IgG:98.8% IgM:91.6%	IgG:99.8% IgM:98.7%
Dengue NS1	RR0221	S/P	99.93%	99.98%
Dengue NS1	RR0221W	WB/S/P	99.93%	99.98%
Zika IgG/IgM	RR0311	S/P	98.00%	99.56%
Zika IgG/IgM	RR0311W	WB/S/P	98.00%	99.56%
Zika NS1 Antigen	RR0321	S/P	98.43%	99.72%
Zika NS1 Antigen	RR0321W	WB/S/P	98.43%	99.72%
Zika Antibody	RR0341	WB/S/P	91.20%	99.50%
Yellow Fever Virus IgG/IgM	RR0411	S/P	IgM:98% IgG: 99%	IgM:99.33% IgG: 99.33%
Yellow Fever Virus IgG/IgM	RR0411W	WB/S/P	IgM:98% IgG: 99%	IgM:99.33% IgG: 99.33%
Yellow Fever NS1 Antigen	RR0421	S/P	98.43%	99.72%
Yellow Fever NS1 Antigen	RR0421W	WB/S/P	98.43%	99.72%
Chikungunya Virus IgG/IgM	RR0511	S/P	96.15%	99.41%
Chikungunya Virus IgG/IgM	RR0511W	WB/S/P	96.15%	99.41%
Chikungunya Virus IgM	RR0521	S/P	97.33%	99.50%
Chikungunya Virus IgM	RR0521W	WB/S/P	97.33%	99.50%

Tropical& Vector-Borne Diseases

Product Name	Catalog	Specimen	Sensitivity	Specificity
Chikungunya Virus NS1 Antigen	RR0531	S/P	98.43%	99.72%
Chikungunya Virus NS1 Antigen	RR0531W	WB/S/P	98.43%	99.72%
JEV IgM	RR0611	S/P	92.90%	99.10%
JEV IgM	RR0611W	WB/S/P	92.90%	99.10%
JEV NS1 Antigen	RR0621	S/P	98.43%	99.72%
JEV NS1 Antigen	RR0621W	WB/S/P	98.43%	99.72%
West Nile Fever IgG/IgM	RR1411	S/P	IgM:97.83% IgG: 98.0%	IgM:99.42% IgG: 99.56%
West Nile Fever IgG/IgM	RR1411W	WB/S/P	IgM:97.83% IgG: 98.0%	IgM:99.42% IgG: 99.56%
West Nile Fever NS1 Antigen	RR1421	S/P	98.43%	99.72%
West Nile Fever NS1 Antigen	RR1421W	WB/S/P	98.43%	99.72%
Leishmania IgG/IgM	RR0711	S/P	IgM: 91.2% IgG: 92.9%	IgM: 99.5% IgG: 99.0%
Leishmania IgG/IgM	RR0711W	WB/S/P	IgM: 91.2% IgG: 92.9%	IgM: 99.5% IgG: 99.0%
Leishmania Antibody	RR0721	S/P	91.20%	99.50%
Leishmania Antibody	RR0721W	WB/S/P	91.20%	99.50%
Malaria PF Antigen (HRP II)	RR0811	Whole Blood	92%	99.10%
Malaria PF Antigen (pLDH)	RR0841	Whole Blood	100%	100%
Malaria Pv Antigen (pLDH)	RR0851	Whole Blood	100%	100%
Malaria PF/PV Antigen (HRP II/pLDH)	RR0821	Whole Blood	100%	100%
Malaria PF/PV Antigen (pLDH/pLDH)	RR0861	Whole Blood	100%	100%

Tropical & Vector-Borne Diseases

Product Name	Catalog	Specimen	Sensitivity	Specificity
Malaria Pf/Pan Antigen (HRP II/pLDH)	RR0831	Whole Blood	100%	100%
Filariasis IgG/IgM	RR0911	S/P	IgM: 98% IgG: 98.21%	IgM: 99.33% IgG: 99.5%
Filariasis IgG/IgM	RR0911W	WB/S/P	IgM: 98% IgG: 98.21%	IgM: 99.33% IgG: 99.5%
Filariasis Antibody	RR0921	S/P	91.20%	99.50%
Filariasis Antibody	RR0921W	WB/S/P	91.20%	99.50%
Leptospira IgG/IgM	RR1011	S/P	IgM: 90% IgG: 100%	IgM: 99% IgG: 99%
Leptospira IgG/IgM	RR1011W	WB/S/P	IgM: 90% IgG: 100%	IgM: 99% IgG: 99%
Leptospira Antibody	RR1021	S/P	91.20%	99.50%
Leptospira Antibody	RR1021W	WB/S/P	91.20%	99.50%
Chagas IgG/IgM	RR1111	S/P	IgM: 85.7% IgG: 96.0%	IgM: 96.5% IgG: 99.56%
Chagas IgG/IgM	RR1111W	WB/S/P	IgM: 85.7% IgG: 96.0%	IgM: 96.5% IgG: 99.56%
Chagas Antibody	RR1121	S/P	92.90%	100%
Chagas Antibody	RR1121W	WB/S/P	92.90%	100%
Lyme IgM	RR1521	S/P	92.90%	99.10%
Lyme IgM	RR1521W	WB/S/P	92.90%	99.10%
Lyme IgG/IgM	RR1511	S/P	IgM: 90.7% IgG: 97.0%	IgM: 96.5% IgG: 99.5%
Lyme IgG/IgM	RR1511W	WB/S/P	IgM: 90.7% IgG: 97.0%	IgM: 96.5% IgG: 99.5%
Lyme Antibody	RR1531	S/P	95.90%	99.20%

Tropical& Vector-Borne Diseases

Product Name	Catalog	Specimen	Sensitivity	Specificity
Lyme Antibody	RR1531W	WB/S/P	95.90%	99.20%
Tsutsugamushi IgM	RR1211	S/P	92.90%	99.10%
Tsutsugamushi IgM	RR1211W	WB/S/P	92.90%	99.10%
Tsutsugamushi IgG/IgM	RR1221W	WB/S/P	gM: 97.83% IgG: 98.0%	IgM: 99.42% IgG: 99.56%
Hantan IgM	RR1311	S/P	95.50%	99.60%
Hantan IgM	RR1311W	WB/S/P	95.50%	99.60%
Langya Henipa Virus IgG/IgM	RR1611	S/P	IgM: 94.83% IgG: 96.0%	IgM: 99.42% IgG: 99.56%
Langya Henipa Virus IgG/IgM	RR1611W	WB/S/P	IgM: 94.83% IgG: 96.0%	IgM: 99.42% IgG: 99.56%
Langya Henipa Virus IgM	RR1621	S/P	95.50%	99.60%
Langya Henipa Virus IgM	RR1621W	WB/S/P	95.50%	99.60%

Respiratory Tract

Product Name	Catalog	Specimen	Sensitivity	Specificity
SARS-CoV-2 IgG/IgM	RS101101	S/P	IgM: 94.83% IgG: 96.0%	IgM: 99.42% IgG: 99.56%
SARS-CoV-2 IgG/IgM	RS101101W	WB/S/P	IgM: 94.83% IgG: 96.0%	IgM: 99.42% IgG: 99.56%
SARS-CoV-2 IgG/IgM/IgA	RS101201	S/P	IgM: 94.83% IgG: 96.0% IgA:97%	IgM: 99.42% IgG: 99.56% IgA:99.8%
SARS-CoV-2 IgG/IgM/IgA	RS101201W	WB/S/P	IgM: 94.83% IgG: 96.0% IgA:97%	IgM: 99.42% IgG: 99.56% IgA:99.8%
SARS-CoV-2 Antigen (np)	RS101301	Throat swabs and nasopharyngeal swab	30≤Ct-Wert 35:94.67% Ct-Wert≤30:97.63% Ct-Wert≤27:98.81%	30≤Ct-Wert 35:100% Ct-Wert≤30:100% Ct-wert≤27:100%
SARS-CoV-2 Antigen (np)	RS101303	saliva or sputum	30≤Ct-Wert35:94.67% Ct-Wert≤30:9763% Ct-Wert≤27:98.81%	30≤Ct-Wert:35:100% Ct-Wert≤30:100% Ct-Wert≤27:100%
SARS-CoV-2 Neutralizing Antibody	RS101401	S/P	98.50%	99.75%
SARS-CoV-2 Neutralizing Antibody	RS101401W	WB/S/P	98.50%	99.75%
SARS-CoV-2 RBD IgG Antibody	RS101501	S/P	98.50%	99.75%
SARS-CoV-2 RBD IgG Antibody	RS101501W	WB/S/P	98.50%	99.75%
Influenza A and B Antigen	RS101701	Throat swabs and nasopharyngeal swab	Influenza A: 99.38% Influenza B:99.33%	Influenza A: 99.33% Influenza B:99.77%
Influenza A Antigen	RS101702	Throat swabs and nasopharyngeal swab	99.33%	99.77%

Respiratory Tract

Product Name	Catalog	Specimen	Sensitivity	Specificity
Influenza B Antigen	RS101703	Throat swabs and nasopharyngeal swab	99.38%	99.33%
SARS-CoV-2+Influ A/B (Combo) Antigen	RS101801	Throat swabs and nasopharyngeal swab	SARS-CoV-2: 99.75% Influenza A;99.38% Influenza B;99.33%	SARS-CoV-2:100% Influenza A:99.77% influenza B:99.33%
SARS-CoV-2 /Influenza A/B and Respiratory Syncytial Virus (RSV) Antigen	RS1019	Throat swabs and nasopharyngeal swab	SARS-COV-2:98.8% Influenza A/B:987% RSV:98.5%	SARS-COV-2:99.8% influenza A/B:99.6% RSV:99.5%
Adenovirus Antigen	RF1311	Throat swabs and nasopharyngeal swab	30≤Ct-Wert35:97.56% Ct-Wert≤30: 99.17% Ct-Wert≤27:100%	30≤Ct-Wert35:99.44% Ct-Werts30:99.68% Ct-Werts≤27:99.63%
Respiratory Syncytial Virus (RSV) Antigen	RT0611	Throat swabs and nasopharyngeal swab	98.50%	99.50%
Chlamydia pneumoniae IgM	RF0711	WB/S/P	90%	99.91%
Chlamydia pneumoniae IgG	RF0721	WB/S/P	99.84%	98.91%
Chlamydia pneumoniae IgG/IgM	RF0731	WB/S/P	IgM: 90.0% IgG:100%	IgM: 99% IgG: 99%
Mycoplasma pneumoniae IgM	RF0611	WB/S/P	90%%	99.91%
Mycoplasma pneumoniae IgG	RF0621	WB/S/P	99.84%	98.91%
Mycoplasma pneumoniae IgG/IgM	RF0631	WB/S/P	IgM: 90.0% IgG:100%	IgM: 99% , IgG: 99%

Respiratory Tract

Product Name	Catalog	Specimen	Sensitivity	Specificity
Mycoplasma pneumoniae Antigen	RF1011	Throat nasopharyngeal swab	95.15%	99.56%
M. Tuberculosis Antibody Test (TB)	RF0321	WB/S/P	98.84%	98.91%
M. Tuberculosis IgG/IgM (TB)	RF0311	WB/S/P	IgM: 85.7% IgG: 88.6%	IgM: 96.5% IgG: 96.5%
M. Tuberculosis Antigen Test (TB)	RF0331	WB/S/P	98.84%	98.91%
Human Rhinovirus Antigen	RT1011	Throat nasopharyngeal swab	95.65%	98.91%
Human Boca virus Antigen	RT1111	Throat nasopharyngeal swab	96.97%	99.49%
StrepA Antigen	RT1211	Throat nasopharyngeal swab	94%	98%
SARS-CoV-2 Antigen(RBD)	RS130105	Throat nasopharyngeal swab	30≤Ct-Wert35:94.67% Ct-Wert≤30:97.63% Ct-Wert≤27:98.81%	30≤Ct-Wert 35:100% Ct-Wert≤30:100% Ct-Wert≤27:100%
Human Metapneumo Virus Antigen	RT1311	Throat nasopharyngeal swab	95.15%	99.56%
EBV IgA Antibody (EBNA)	RF1111	WB/S/P	90%	99.91%
EBV IgG Antibody (EBNA)	RF1112	WB/S/P	93%	99%
EBV IgA Antibody (VCA)	RF1121	WB/S/P	90%	100%
EBV IgG Antibody (VCA)	RF1122	WB/S/P	93%	99%
EBV IgM Antibody (VCA)	RF1123	WB/S/P	93%	99%

Respiratory Tract

Product Name	Catalog	Specimen	Sensitivity	Specificity
EBV IgA Antibody (EA)	RF1131	WB/S/P	91%	99.41%
EBV IgG Antibody (EA)	RF1132	WB/S/P	92%	98%
EBV IgA Antibody (ZTA)	RF1141	WB/S/P	90%	99.11%
Legionella pneumophila Antigen	RF0811	Urine	96.97%	99.49%
Influ A+B and RSV Antigen	RT0631	Throat swabs and nasopharyngeal swab	Influenza A/B:98.7% RSV:98.5%	Influenza A/B:99.6% RSV:99.5%

Sexually Transmitted Diseases

Product Name	Catalog	Specimen	Sensitivity	Specificity
HIV (I+II) Antibody (Trilines)	RF0111	S/P	100%	99.98%
HIV (I+II) Antibody (Trilines)	RF0111W	WB/S/P	100%	99.98%
HIV (I+II) Antibody (Trilines)	RF0111S	S/P	100%	99.98%
HIV (I+II) Antibody (Two lines)	RF0121	S/P	100%	99.98%
HIV (I+II) Antibody (Two lines)	RF0121W	WB/S/P	100%	99.98%
HIV (I+II) Antibody (Two lines)	RF0121S	S/P	100%	99.98%
HIV (I+II+O) Antibody (Trilines)	RF0131	S/P	100%	99.98%
HIV (I+II+O) Antibody (Trilines)	RF0131W	WB/S/P	100%	99.98%
HIV (I+II+O) Antibody (Trilines)	RF0125S	S/P	100%	99.98%
HIV Antigen/Antibody	RF0151	S/P	Antibody: 99.97% Antigen: 99%	Antibody: 99.98% Antigen: 99.8%
HIV Antigen/Antibody	RF0151W	WB/S/P	Antibody: 99.97% Antigen: 99%	Antibody: 99.98% Antigen: 99.8%
HIV (I+II) Antibody (Two lines)	RF0161	Saliva	99.20%	99.90%
HIV (I+II) Antibody (Two lines)	RF0124	Urine	98.90%	99.90%
HIV (I+II) Antibody (Two lines)	RF0124S	Urine	98.90%	99.90%
HIV (I+II) Antibody (Two lines)	RF0171	Urine	98.90%	99.90%
HIV (I+II) Antibody (Two lines)	RF0171S	Urine	98.90%	99.90%
TP Antibody	RF0211	S/P	100%	98.98%
TP Antibody	RF0211W	WB/S/P	100%	98.98%
TP Antibody	RF0211S	S/P	100%	98.98%
HSV-I IgM	RT0311	WB/S/P	90%	99.91%
HSV-I IgG	RT0321	WB/S/P	99.84%	98.91%

Sexually Transmitted Diseases

Product Name	Catalog	Specimen	Sensitivity	Specificity
HSV-I IgG /IgM	RT0331	WB/S/P	IgM: 90.0% IgG:100%	IgM: 99% IgG: 99%
HSV-II IgM	RT0411	WB/S/P	90%	99.91%
HSV-II IgG	RT0421	WB/S/P	99.84%	98.91%
HSV-II IgG/IgM	RT0431	WB/S/P	IgM: 90.0% IgG:100%	IgM: 99% IgG: 99%
HSV-I/II IgG/IgM	RT0441	WB/S/P	IgM: 90.0% IgG:100%	IgM: 99% IgG: 99%
Chlamydia Antigen	RT1411	Endocervical or Encourethral swab	94.10%	97.40%
Gonorrhea Antigen	RT1511	Female Cervical Male Urethral Swab Male Urine	94.10%	97.40%
Trichomonas Antigen	RT1611	Vaginal discharge	83%	99%
Candida albicans	RG0541	Vaginal discharge	92.30%	98.60%
HIV / HCV Antibody Test(Trilines)	RC0111	S/P	HIV: 99.5% HCV: 99%	HIV: 99.98% HCV: 99.1%
HIV / HCV Antibody Test(Trilines)	RC0111W	WB/S/P	HIV: 99.5% HCV: 99%	HIV: 99.98% HCV: 99.1%
HIV / TP Antibody Test(Trilines)	RC0211	S/P	HIV: 99.97% TP: 99.8%	HIV: 99.98% TP: 98.7%
HIV / TP Antibody Test(Trilines)	RC0211W	WB/S/P	HIV: 99.97% TP: 99.8%	HIV: 99.98% TP: 98.7%
Monkeypox (MPV) IgG/IgM	RS0111	S/P	99.50%	99.95%
Monkeypox (MPV) IgG/IgM	RS0111W	WB/S/P	99.50%	99.95%
Monkeypox (MPV) Antigen	RS0121	S/P/Rash Exudate/Nasal swab/Scabs	99.50%	99.95%
Monkeypox (MPV) Antigen	RS0121W	WB/S/P/Rash Exudate/Nasal swab/ Scabs	99.50%	99.95%

TORCH & Childhood

Product Name	Catalog	Specimen	Sensitivity	Specificity
TOXO IgM	RT0111	WB/S/P	90%	99.91%
TOXO IgG	RT0121	WB/S/P	99.84%	98.91%
TOXO IgG/IgM	RT0131	WB/S/P	IgM: 90.0% IgG:100%	IgM: 99% IgG: 99%
CMV IgM	RT0211	WB/S/P	90%	99.91%
CMV IgG	RT0221	WB/S/P	99.84%	98.91%
CMV IgG/IgM	RT0231	WB/S/P	IgM: 90.0% IgG:100%	IgM: 99% IgG: 99%
HSV-I IgM	RT0311	WB/S/P	90%	99.91%
HSV-I IgG	RT0321	WB/S/P	99.84%	98.91%
HSV-I IgG /IgM	RT0331	WB/S/P	IgM: 90.0% IgG:100%	IgM: 99% IgG: 99%
HSV-II IgM	RT0411	WB/S/P	90%	99.91%
HSV-II IgG	RT0421	WB/S/P	99.84%	98.91%
HSV-II IgG/IgM	RT0431	WB/S/P	IgM: 90.0% IgG:100%	IgM: 99% IgG: 99%
HSV-I/II IgG/IgM	RT0441	WB/S/P	IgM: 90.0% IgG:100%	IgM: 99% IgG: 99%
Rubella IgM	RT0511	WB/S/P	90%	99.91%
Rubella IgG	RT0521	WB/S/P	99.84%	98.91%
Rubella IgG/IgM	RT0531	WB/S/P	IgM: 90.0% IgG:100%	IgM: 99% IgG: 99%
Meales IgG/IgM	RT0711	WB/S/P	IgM: 90.0% IgG:100%	IgM: 99% IgG: 99%

Hepatitis

Product Name	Catalog	Specimen	Sensitivity	Specificity
HCV Antibody	RL0111	S/P	99.80%	99.50%
HCV Antibody	RL0111W	WB/S/P	99.80%	99.50%
HCV Antibody	RL0111S	S/P	99.80%	99.50%
HBs Antigen	RL0211	S/P	96%	100%
HBs Antigen	RL0211W	WB/S/P	96%	100%
HBs Antigen	RL0211S	S/P	96%	100%
HBs Antibody	RL0221	S/P	95.60%	100%
HBs Antibody	RL0221W	WB/S/P	95.60%	100%
HBc Antigen	RL0251	S/P	95.60%	100%
HBc Antigen	RL0251W	WB/S/P	95.60%	100%
HBV e Antibody	RL0231	S/P	95.60%	100%
HBV e Antibody	RL0231W	WB/S/P	95.60%	100%
HBV e Antigen	RL0241	S/P	95.60%	100%
HBV e Antigen	RL0241W	WB/S/P	95.60%	100%
HAV IgM	RL0311	S/P	96%	99.70%
HAV IgM	RL0311W	WB/S/P	96%	99.70%
HAV IgG/IgM	RL0321	S/P	96%	99.70%
HAV IgG/IgM	RL0321W	WB/S/P	96%	99.70%
HEV IgM	RL0411	S/P	98.80%	99.90%
HEV IgM	RL0411W	WB/S/P	98.80%	99.90%
HEV IgM/IgM	RL0421	S/P	98.80%	99.90%

Hepatitis

Product Name	Catalog	Specimen	Sensitivity	Specificity
HEV IgM/IgM	RL0421W	WB/S/P	98.80%	99.90%
HBs Antigen/HCV (trilines)	RC0311	S/P	98.80%	99.90%
HBs Antigen/HCV (trilines)	RC0311W	WB/S/P	98.80%	99.90%

Gastrointestinal Pathogens

Product Name	Catalog	Specimen	Sensitivity	Specificity
Adenovirus Antigen	RF1321	Fecal	97.40%	99%
Rota virus Antigen	RT0811	Fecal	100%	97.20%
H.Pylori Antigen	RD0111	Fecal	94.40%	100%
H.Pylori Antigen	RD0111S	Fecal	94.40%	100%
H.Pylori Antibody	RD0211	WB/S/P	98.15%	100%
H.Pylori/Transferrin(TRF) Antigen	RG1311	Fecal	H.P: 94.4% TRF:95.3 %	H.P:100% TRF:99.2%
FOB Antigen	RD0311	Fecal	5ng/ml	99%
EV71 IgM	RF0911	WB/S/P	90.00%	95.20%
C.Difficile GDH Antigen	RG0111	Fecal	98.81%	99.33%
C.Difficile Toxin B Antigen	RG0121	Fecal	98.81%	99.33%
C.Difficile Toxin A Antigen	RG0131	Fecal	98.81%	99.33%
C.Difficile Toxin A/B Antigen	RG0141	Fecal	98.81%	99.33%
Astrovirus Antigen	RG0211	Fecal	30≤Ct-Wert 35:96.77% Ct-Wert≤30: 97.5% Ct-Wert≤27:99%	30≤Ct-Wert 35:98.75% Ct-Wert≤30: 99.25% Ct-Wert≤27:99.49%
Norovirus Antigen	RG0311	Fecal	98.33%	99.33%

Gastrointestinal Pathogens

Product Name	Catalog	Specimen	Sensitivity	Specificity
Norovirus (GI) Antigen	RG0331	Fecal	95.57%	99.50%
Norovirus (GII) Antigen	RG0332	Fecal	95.28%	98.77%
Cryptosporidium Parvum Antigen	RG0411	Fecal	98.33%	99.33%
Rota/Adeno Antigen Combo	RG0511	Fecal	Rota:96.43% Adeno:97.73%	Rota:97.5% Adeno:99.5%
Cholera Antigen	RG0614	Fecal	O1:97.0% O139:96.7%	O1:94.7% O139:94.3%
Cholera (O1/O139) Antigen	RG0612	Fecal	97%	94.70%
Cholera O1 Antigen	RG0613	Fecal	97%	97.20%
Cholera O139 Antigen	RG0611	Fecal	97%	97.20%
Salmonella Typhoid Antigen	RG0711	Fecal	98.33%;	99.33%
Salmonella paratyphi A Antigen	RG1411	Fecal	98.18%	99.16%
Salmonella paratyphi B Antigen	RG1421	Fecal	98.20%	99%
Salmonella paratyphi A/B Antigen	RG1431	Fecal	A:98.18% B:98.2%	A:99.16% B:99%
Giardia Antigen	RG0811	Fecal	98.18%	99.16%
Norovirus GI/GII Antigen	RG0321	Fecal	GI:95.57% GII:95.28%	GI:99.5% GII:98.77%
Rota Virus+Norovirus (GI/GII) Antigen	RG0531	Fecal	Rota:96.43% Noro:97.73%	Rota:97.5% Noro:99.5%
Enterovirus Antigen	RG1011	Fecal	>99%	>99%
E.coli (O157) Antigen	RG1111	Fecal	>85%	>99%
Campylobacter Jejuni Antigen	RG1511	Fecal	98.20%	99%
Entamoeba Antigen	RG1611	Fecal	98.20%	99%
Calprotectin (Cal)	RG1211	Fecal	500ng/g	

Cancer Maker

Product Name	Catalog	Specimen	Sensitivity	Specificity
FER Antgen	RF1411	WB/S/P	1 ng/ml	99.50%
TRF Antigen	RF1511	Fecal	95.30%	99.20%
cTnl	RF1611	WB/S/P	0.5ng/ml	99.50%
IGFBP	RF1711	WB/S/P	99.90%	98%
CEA	RF1811	WB/S/P	99.30%	99.10%
mALB	RG0911	Urine	20ug/ml	98.51%
Myoglobin (MYO)	RI0311	WB/S/P	100%	97.70%
AFP	RF1911	WB/S/P	99.30%	99.10%
Prostate Specific Antigen (PSA)	RF2011	WB/S/P	98.70%	98.50%
CK-MB Antigen	RF2111	WB/S/P	100%	99.80%
D-Dimer Antigen	RF2211	WB/S/P	98.70%	89.30%

Inflammation

Product Name	Catalog	Specimen	Sensitivity	Specificity
CRP	RI0111	WB/S/P	10ng/ml	99.51%
PCT	RI0211	WB/S/P	10ng/ml	99.10%

Hormones

Product Name	Catalog	Specimen	Sensitivity	Specificity
HCG	RHR0001	Urine	100%	99.80%
HCG	RHR0001S	Urine	100%	99.80%
FSH	RHR0211	Urine	100%	99.80%
FSH	RHR0111	WB/S/P		
Lactoprotein	RHR0311	Fecal	500ng/g stool	98%
LH	RHR0002	Urine	100%	99.80%
Thyroid Stimulating Hormone (TSH)	RHR0411	WB/S/P	98%	99.51%

Allergen

Product Name	Catalog	Specimen	Sensitivity	Specificity
IgE Antibody	RAT0110	WB/S/P	98%	99.51%

Drug of Abuse

Product Name	Catalog	Specimen	Cut-off
Methamphetamine(MET)	RDR001	urine	1000ng/ml
Morphine(MOR)	RDR002	urine	300ng/ml
Amphetamine(AMP)	RDR003	urine	1000ng/ml
Buprenorphine(BUP)	RDR004	urine	10ng/ml
Benzoylecgonine(COC)	RDR005	urine	300ng/ml
Tramadol(TML)	RDR006	urine	300ng/ml
Methadone(MTD)	RDR007	urine	300ng/ml
Marijuana(THC)	RDR008	urine	50ng/ml
Benzodiazepines (BZO)	RDR009	urine	300ng/ml
Tricyclie Antidepressants (TCA)	RDR010	urine	1000ng/ml
MDMA	RDR011	urine	500ng/ml
SOMA	RDR012	urine	1000ng/ml
Synthetic Cannabis (K2)	RDR013	urine	50ng/ml
Barbiturates (BAR)	RDR014	urine	300ng/ml
Cotinine (COT)	RDR015	urine	200ng/ml
EDDP	RDR016	urine	300ng/ml
Fentanyl (FYL)	RDR017	urine	200ng/ml
Ketamine (KET)	RDR018	urine	1000ng/ml
Methaqualone (MQL)	RDR019	urine	300ng/ml
Opiates (OPI)	RDR020	urine	2000ng/ml
Oxycodone (OXY)	RDR021	urine	100ng/ml
Phencyclidine (PCP)	RDR022	urine	25ng/ml
Propoxyphene (PPX)	RDR023	urine	300ng/ml
Tramadol (ETG)	RDR024	urine	1000ng/ml

Canine Disease Test

Product Name	Catalog	Specimen
CPV Antigen Rapid Test	RPA0111	Body Secretion
Canine CRP Antigen Rapid Test	RPA0211	Feces
CDV Antigen Rapid Test	RPA0311	Feces
CCV Antigen Rapid Test	RPA0411	Body Secretion
Canine Influa Antigen Rapid Test	RPA0511	Feces
CCV/CPV Antigen Rapid Test	RPA0121	Body Secretion
Rota virus Antigen Rapid Test	RPA0611	Feces
CHW Antigen Rapid Test	RPA0711	WB/S/P
CDV Antibody Test	RPA0321	WB/S/P
CPV Antibody Test	RPA0131	WB/S/P
CPV/CDV Antibody Test	RPA0141	WB/S/P

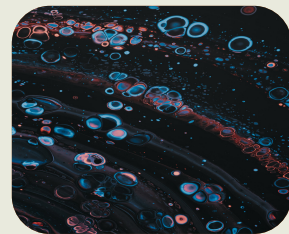


Feline Disease Test

Product Name	Catalog	Specimen
FPV Antigen Rapid Test	RPA0911	Feces
FIV Antigen Rapid Test	RPA1011	WB/S/P
FeLV Antigen Rapid Test	RPA1111	WB/S/P
FCV Antigen Rapid Test	RPA1211	Body Secretion
FHV Antigen Rapid Test	RPA1311	Body Secretion
FCoV Antigen Rapid Test	RPA1411	Feces
FIV Antibody Rapid Test	RPA1021	WB/S/P
FIV Ag/Ab Rapid Test	RPA1031	WB/S/P
FeLV Ag/FIV Ab Rapid Test	RPA1041	WB/S/P

Livestock Diagnosis

Product Name	Catalog	Specimen
PEDV IgA Antibody Test	REA1111	WB/S/P/Colostrum sample
PEDV Antibody Test	REA1121	WB/S/P
PRV gB Antibody Test	REA0411	WB/S/P
CSFV Antibody Test	REA0111	WB/S/P
ASFV Antibody Test	REA0211	WB/S/P
PRRSV Antibody Test	REA0311	WB/S/P/Colostrum sample
Hydatid Disease Antibody Test	REA0711	WB/S/P
IBRV gE Antibody Test	REA1211	WB/S/P/Milk
IBRV gB Antibody Test	REA1221	WB/S/P/Colostrum sample
BVDV P80 Antibody Test	REA0611	WB/S/P/Milk
BVDV gD Antibody Test	REA0621	WB/S/P/Milk
BVDV Antibody Test	REA0631	WB/S/P/Milk
FMDV Antibody Test	REA0511	WB/S/P
Qrf Antibody Test	REA0911	WB/S/P
PPRV Antibody Test	REA0811	WB/S/P



Parasitic Disease and Others

Product Name	Catalog	Specimen
TOXO Antibody Test	RPA0711	WB/S/P
Leptospira IgG/IgM Rapid Test	RPA1311	WB/S/P
Leptospira Antibody Rapid Test	RPA1321	WB/S/P
Leishmania IgG/IgM Rapid Test	RPA1411	WB/S/P
Leishmania Antibody Rapid Test	RPA1421	WB/S/P
Brucella Antibody Rapid Test	RPA1511	WB/S/P
Rota virus Antigen Rapid Test	RPA0611	Feces